

# Royal View Mine



Royal View Collieries located north of Hardieville.

A Rafton-Canning photo.

Four coal mines in the Lethbridge field had Royal or Royal View in the company name. These were Royal Collieries Ltd. (Mine 92) operating from 1907 - 1912; Royal Lethbridge Collieries Ltd. (Mine 1095) which operated from 1925 - 1928; the Royal View Mine (Mine 1109) operating from 1923 to 1942; and the New Royal View Mine (Mine 1219) from 1944-1946.

The first three were clustered in and adjacent to the SE quarter of Sec. 31, Twp 9, Rge. 21, W 4 located about 3.2 km north of Hardieville. The fourth was located about 8 km southeast of the others.

Mine 1109 had a total production of 140,358 tonnes. Called the Hamilton Mine and the Royal View Coal Mine, it was popularly known as "the Swede's mine" because of Scandinavian ownership. The mine generally operated October to May each year, shutting down through the summer months because of seasonal demand.

Mine 1109, with workings 15 m. below the level of the river, had problems with water. On Oct. 17, 1942, a major flood of water broke through the roof of one of the coal extraction rooms and flooded part of the mine. Timber dams were built in the tunnels to contain the water and prevent flooding of the entire underground workings, but this effort was only partially successful. In Nov. 1942 the mine was closed. The tippie and head frame were dismantled and sold to the J.J. Hamilton Coal Co. for use in its Federal Mine, and the mine shafts were filled in.

The new Royal View Mine (Mine 1219) was operated as a co-operative from June 1937 to 1942. The Lethbridge Social Credit Co-operative Miners' Association Ltd. was made up of unemployed miners. The miners had all the necessary skills to operate a mine and received financial assistance (\$10,000) from the Alberta government. They also received assurance they could stay on "Relief" (Social Assistance) until the mine began to turn a profit. Shares with a face value of \$10.00 each were sold to investors but never returned a dividend. Social Credit was dropped from the corporate name in 1937 because of political opposition. After mines at Commerce and Diamond City were abandoned, some of the timbers ended up in the hands of the Lethbridge Miners Co-op.

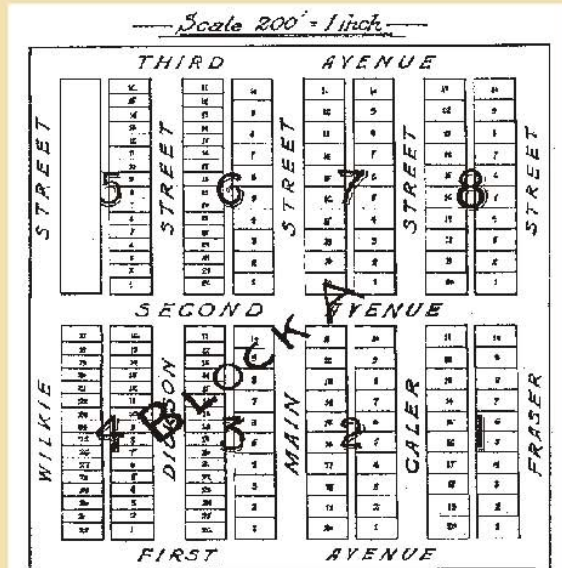


The Lethbridge Miners' Band. Entertainment and relaxation for miners.

Sir Alexander Galt Museum & Archives



Lethbridge Social Credit Co-operative Mine Share. Note the increase in share cost to \$10.00 from \$1.00.



Surveyors plan of the village of Royal View, also called Coal City or Royal City. In 1910 the population was approximately 400. By 1917 the Henderson Directory listing was gone, presumably the village population was decreasing. The mine closed in 1943.

Sir Alexander Galt Museum & Archives

Project of:



Assistance for this project provided by:

Lethbridge Historical Society

